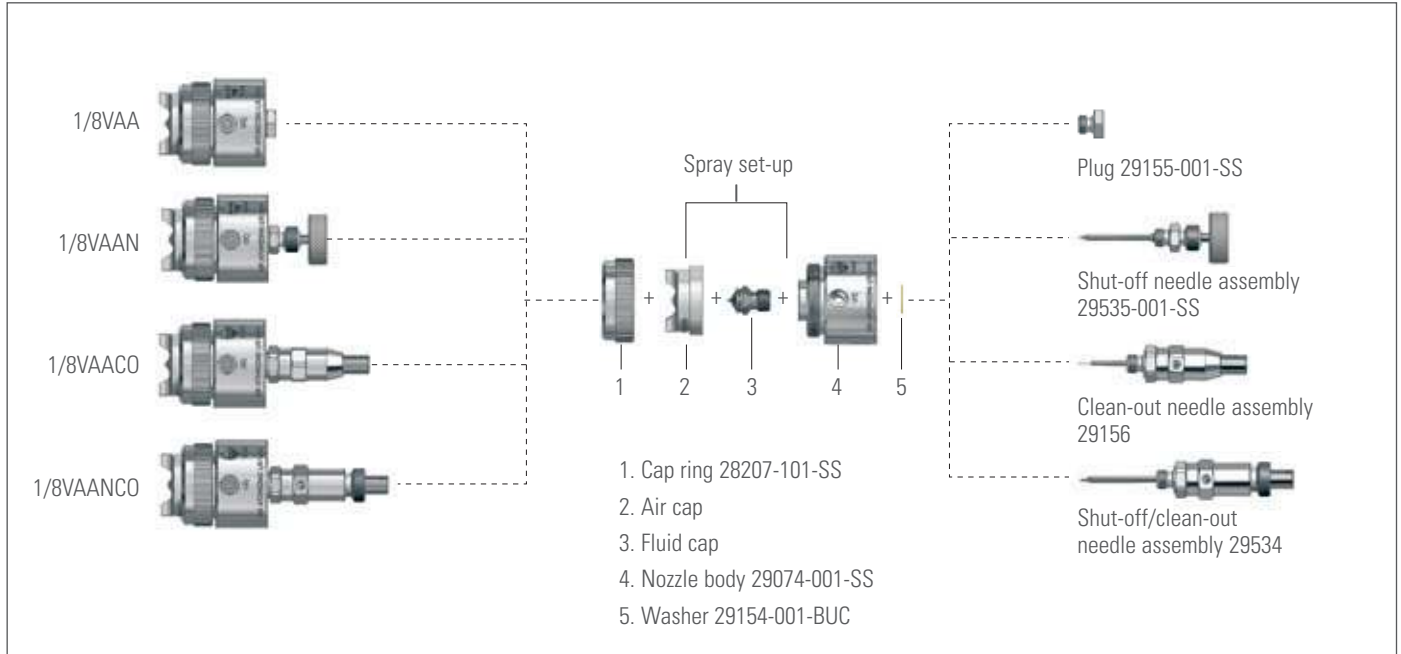


VARIABLE SPRAY NOZZLE OPTIONS



**1/8VAA SERIES NOZZLES**

- Flow rates up to 49.8 gph (189 lph)
- Stainless steel construction
- With fan air in operation, a flat spray pattern is produced; a round spray pattern is produced when fan air is off
- Atomizing air line can be adjusted to vary spray drop size without affecting flow rate
- Dual liquid inlets allow recirculating of sprayed fluid
- Anti-bearding spray set-ups are available



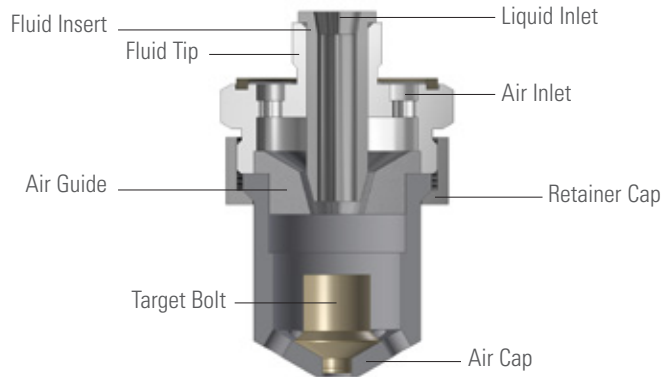
1/8VAA Nozzle

**1/8VAA NOZZLE OPTIONS**

 <p><b>1/8VAAN</b> – Manual shut-off needle to stop liquid flow</p>	 <p><b>1/8VAACO</b> – Manual clean-out needle to clear obstructions from the fluid orifice</p>	 <p><b>1/8VAANCO</b> – Combination shut-off/clean-out needle direction</p>
--	---	--

**OVERVIEW: HIGH EFFICIENCY SPRAY NOZZLE SERIES**

- A patented three-stage atomization process produces relatively high liquid flows with very small drops using low air consumption
- Tight droplet size control for critical spray applications
- Significantly higher turndown ratios than standard air atomizing nozzles for maximum operating flexibility
- Large free passages reduce the risk of clogging
- Available with threaded inlet connections or mounted on standard or made-to-order spray injectors
- Ideal for gas cooling and conditioning applications
- Use with lance and injector spray systems



**FMA FloMax® Nozzle**

Air and liquid converge, allowing high velocity air to shear the liquid. The liquid/air mixture then impacts the target bolt forcing additional mechanical breakup. As the mixture exits the orifices of the air cap, the additional pressure drop further atomizes the liquid.

**QUICK REFERENCE GUIDE**

Product Number	Max Flow	Materials
<b>FloMax X Series</b>	1.5 gpm (5.67 lpm)	310 and 316 stainless steel, Hastelloy® Other materials available upon request
<b>FloMax A Series</b>	45 gpm (170 lpm)	Nozzle materials include 310 and 316 stainless and Hastelloy Air cap materials include reaction-bonded silicon carbide, Stellite®, ceramic and tungsten carbide

**HIGH EFFICIENCY SPRAY NOZZLE SERIES OPTIONS**

**FloMax X Series**

- Flow rates up to 1.5 gpm (5.67 lpm)
- Spray angles of 20°, 55° and 90°
- Stainless steel or Hastelloy construction. Other materials available upon request



**FloMax A Series**

- Flow rates up to 45 gpm (171.3 lpm)
- Spray angles of 20° and 55°
- Stainless steel or Hastelloy construction. Other materials available upon request
- Anti-bearding design available to reduce maintenance in high-particulate spraying applications



**PLACING YOUR ORDER**

**Call 1.630.665.5000 for application assistance or to place an order.**